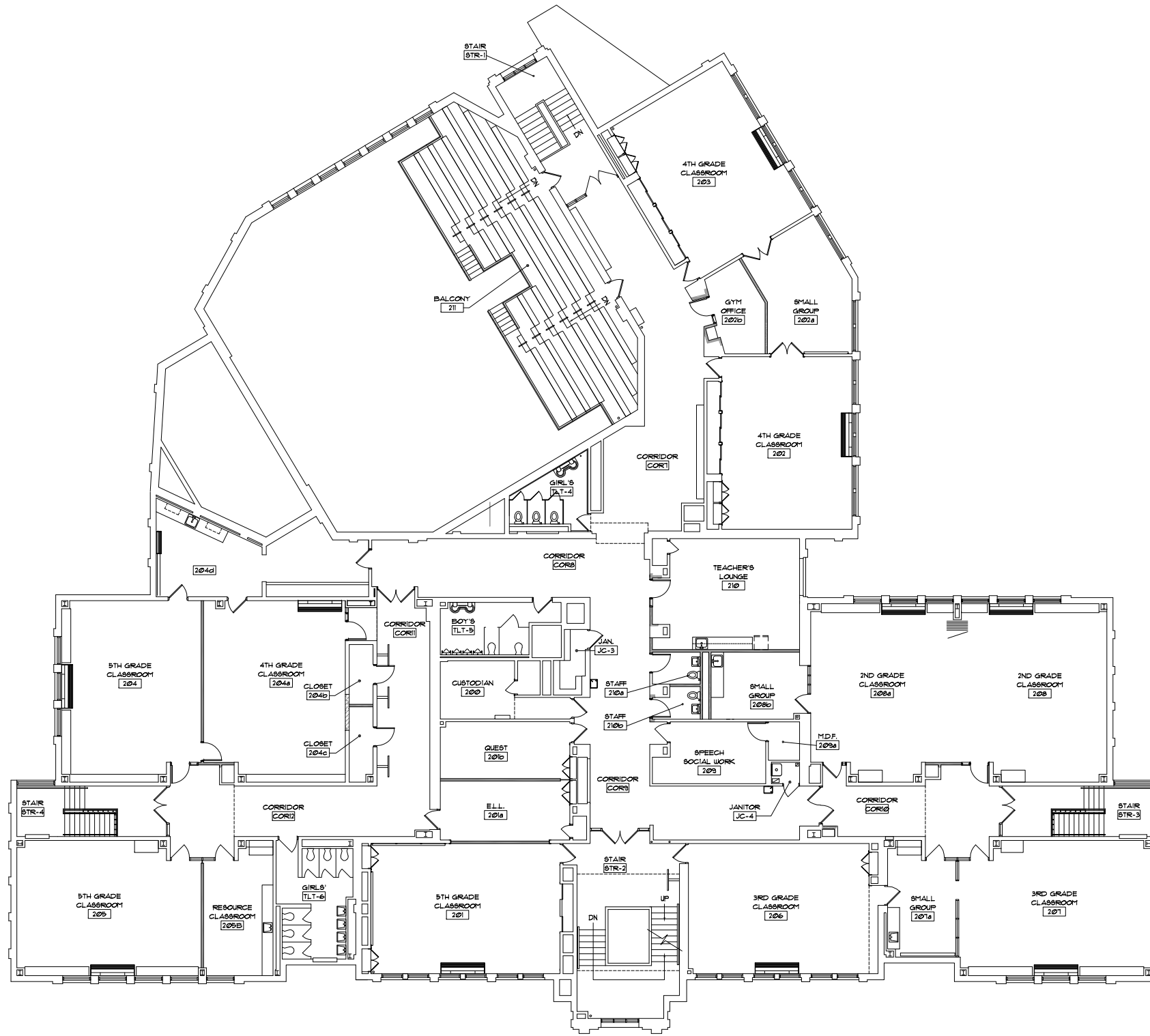
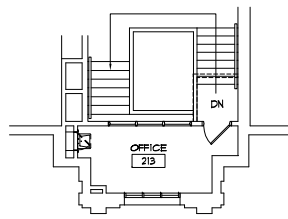


2 THIRD FLOOR PLAN  
SCALE: 1/8" = 1'-0"



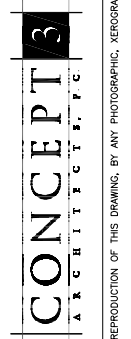
1 SECOND FLOOR PLAN  
SCALE: 1/8" = 1'-0"

REVISIONS	BY

**2012 CAPITAL IMPROVEMENT WORK**  
 for the:  
 BOARD OF EDUCATION  
 CENTRAL ELEMENTARY SCHOOL  
 83 WOODSIDE ROAD  
 RIVERSIDE, ILLINOIS 60546-1988

A. F. AMES ELEMENTARY SCHOOL  
 SECOND & THIRD FLOOR PLANS

101 EAST ST. CHARLES ROAD, SUITE 204  
 VILLA PARK, ILLINOIS 60111  
 PHONE 630.818.0990 FAX 630.818.1190



Date	1-4-2012
Scale	AS NOTED
Drawn	AGM
Job	1026
Sheet	A1-103
Of	Sheets

A. F. AMES ELEMENTARY SCHOOL

THESE DOCUMENTS ARE COPYRIGHTED. REPRODUCTION OF THIS DRAWING, BY ANY PHOTOGRAPHIC, XEROGRAPHIC OR OTHER SIMILAR TECHNIQUE OR PROCESS, DURING THE BIDDING PERIOD OR FOR INCORPORATING THE MATERIAL CONTAINED HEREIN INTO A SHOP DRAWING, IS STRICTLY PROHIBITED WITHOUT THE EXPRESSED CONSENT OF CONCEPT 3 ARCHITECTS, P.C. © 2012 CONCEPT 3 ARCHITECTS, P.C.