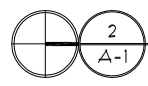
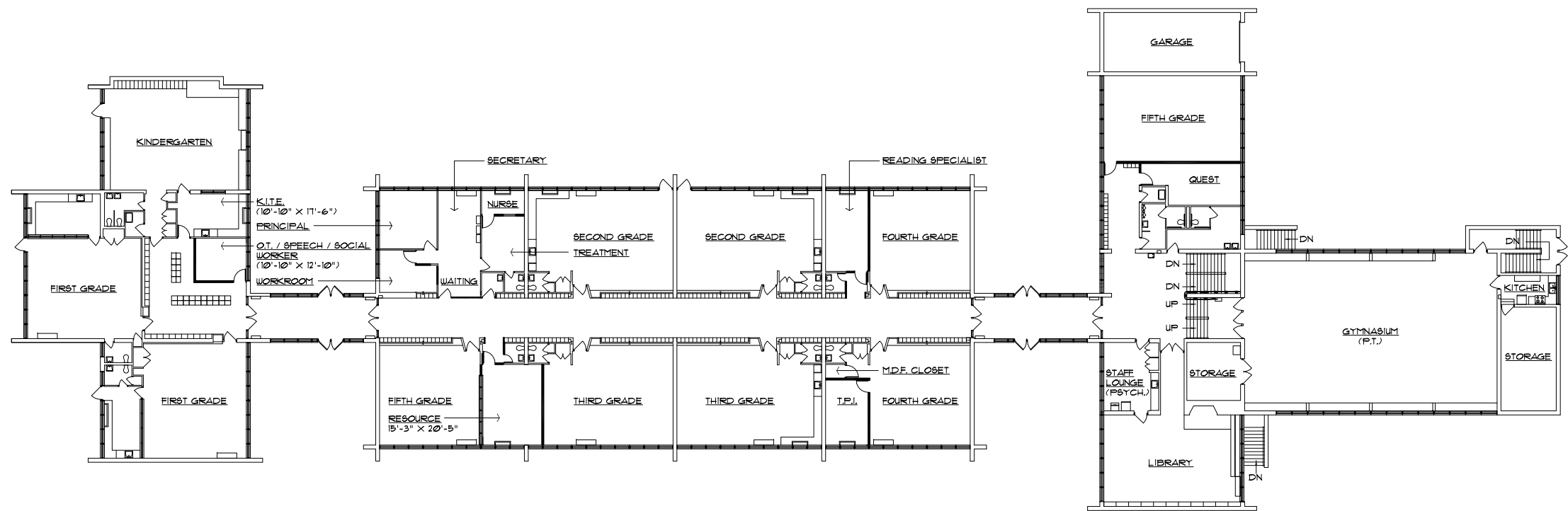
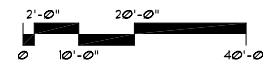


1 BASEMENT FLOOR PLAN

SCALE: 1/16" = 1'-0"



2 COMPOSITE FIRST FLOOR PLAN

SCALE: 1/16" = 1'-0"



BLYTHE PARK ELEMENTARY SCHOOL

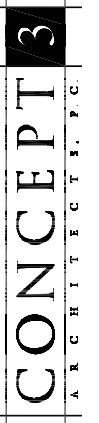
REVISIONS	BY

2011 UTILIZATION STUDY

for the
BOARD OF EDUCATION
RIVERSIDE PUBLIC SCHOOLS DISTRICT NO. 98
63 WOODSIDE ROAD
RIVERSIDE, ILLINOIS 60546-1988

at
BLYTHE PARK ELEMENTARY SCHOOL
735 LEESLEY ROAD
RIVERSIDE, ILLINOIS 60546-1717

101 EAST ST. CHARLES ROAD, SUITE 204
VILLA PARK, ILLINOIS 60181
PHONE 630.833.6090 FAX 630.833.2190



Date	APR 15, 2011
Scale	AS NOTED
Drawn	MEM
Job	10016
Sheet	A-1
Of	2 Sheets

THESE DOCUMENTS ARE COPYRIGHTED. REPRODUCTION OF THIS DRAWING, BY ANY PHOTOGRAPHIC, XEROGRAPHIC OR OTHER SIMILAR TECHNIQUE OR PROCESS, DURING THE BIDDING PERIOD OR FOR INCORPORATING THE MATERIAL CONTAINED HEREON INTO A SHOP DRAWING, IS STRICTLY PROHIBITED WITHOUT THE EXPRESSED CONSENT OF Concept 3 Architects, P.C. © 2011 Concept 3 Architects, P.C.