

| REVISIONS | BY |
|-----------|----|
| | |
| | |
| | |
| | |
| | |
| | |
| | |
| | |
| | |

2011 UTILIZATION STUDY

for the
 BOARD OF EDUCATION
 RIVERSIDE PUBLIC SCHOOLS DISTRICT NO. 96
 63 WOODSIDE ROAD
 RIVERSIDE, IL 60546-1898

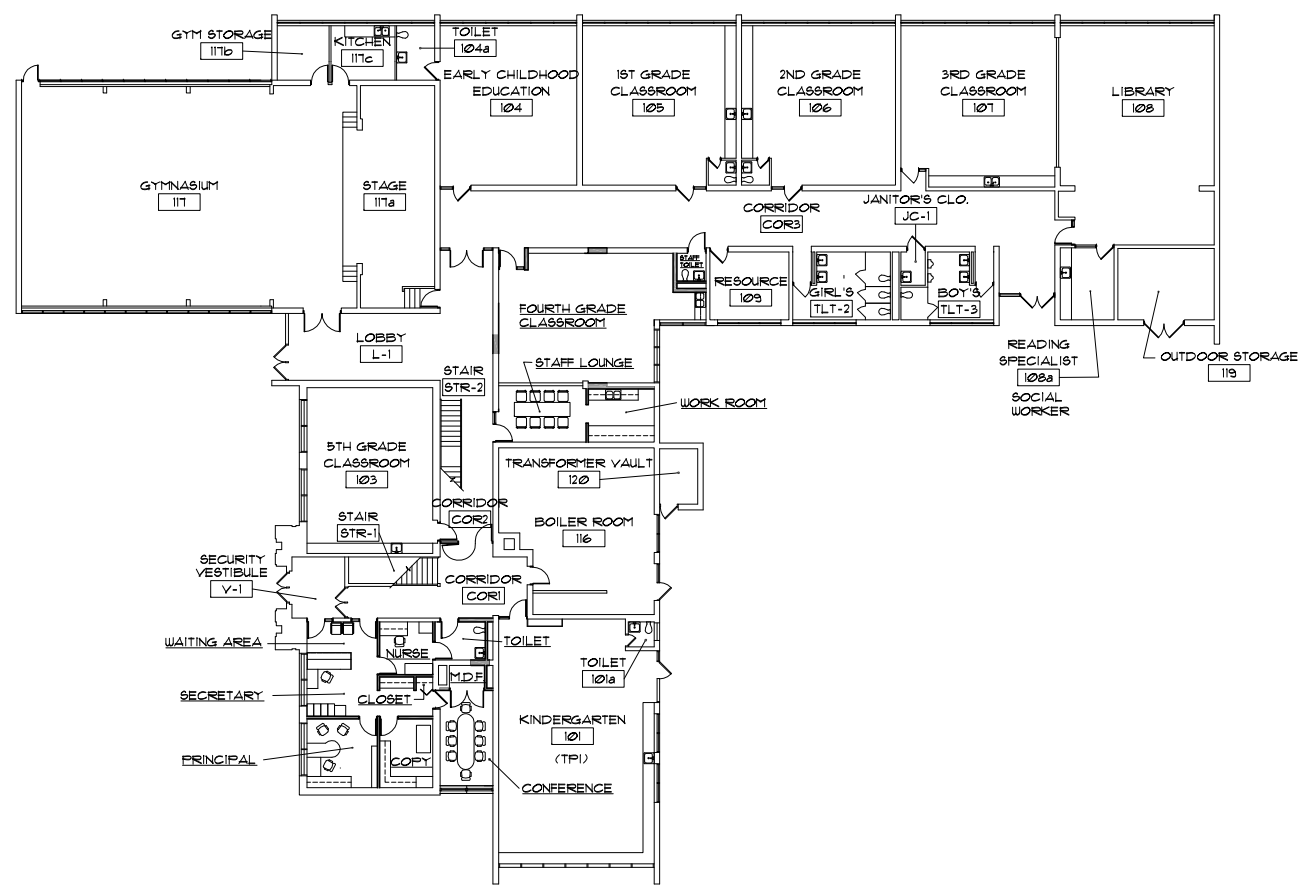
at
 HOLLYWOOD SCHOOL
 3423 HOLLYWOOD AVENUE
 BROOKFIELD, IL 60513

101 EAST ST. CHARLES ROAD, SUITE 204
 VILLA PARK, ILLINOIS 60181
 PHONE 630.833.1690 FAX 630.833.2190

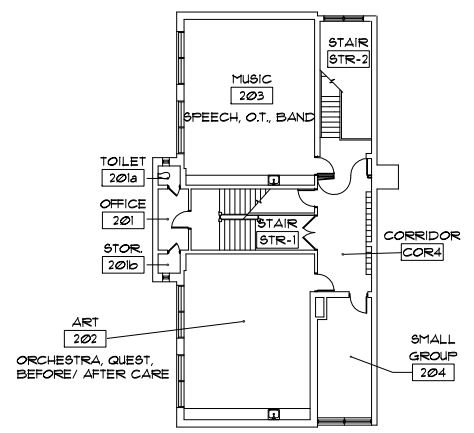
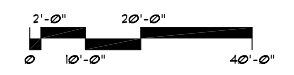


| | |
|-------|--------------|
| Date | APR 15, 2011 |
| Scale | AS NOTED |
| Drawn | MEM |
| Job | 10016 |
| Sheet | A-2 |
| Of | 2 Sheets |

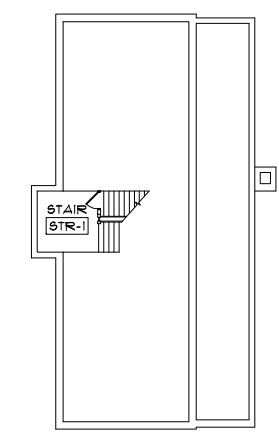
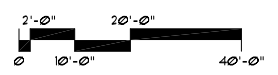
THESE DOCUMENTS ARE COPYRIGHTED. REPRODUCTION OF THIS DRAWING, BY ANY PHOTOGRAPHIC, XEROGRAPHIC OR OTHER SIMILAR TECHNIQUE OR PROCESS, DURING THE BIDDING PERIOD OR FOR INCORPORATING THE MATERIAL CONTAINED HEREON INTO A SHOP DRAWING, IS STRICTLY PROHIBITED WITHOUT THE EXPRESSED CONSENT OF CONCEPT 3 ARCHITECTS, P.C. © 2011 CONCEPT 3 ARCHITECTS, P.C.



1 COMPOSITE GROUND FLOOR PLAN
 A-2 SCALE: 1/16" = 1'-0"



2 COMPOSITE FIRST FLOOR PLAN
 A-2 SCALE: 1/16" = 1'-0"



3 ATTIC PLAN
 A-2 SCALE: 1/16" = 1'-0"

